



**SPM**

# **CAPABILITY STATEMENT**

---

**SUSTAINABLE PROJECT  
MANAGEMENT PTY LTD.**

**ENVIRONMENT  
AND  
PLANNING  
APPROVALS**



# TABLE OF CONTENTS

---

- ▶ About SPM
- ▶ Guiding Principles
- ▶ Meet The Team
- ▶ Our Services
- ▶ Valued Clients
- ▶ Example Projects
- ▶ Contact Us

# ABOUT SPM

Established in 2018, Sustainable Project Management (SPM) has grown into a company with over 100 years combined experience successfully delivering environment and planning approvals. From our office in Torquay, our highly qualified consultants have been servicing the environment and planning approval needs of businesses across the infrastructure, industrial and utility sectors throughout Victoria.

Managing environmental impact is becoming more complex, requiring sustainable solutions that enable economic growth, meet community aspirations and avoid regulatory burden. SPM provides a comprehensive range of environmental management solutions at policy, strategic and operational levels.

Our work is highly regarded by governments and private industry and we pride ourselves on maintaining strong relationships with our clients and regulators.

The team's practical experience and comprehensive knowledge of environment and planning regulations and guidelines, together with a holistic approach to problem-solving, ensures that applications for planning and environmental approvals are streamlined, targeted and solutions based.

We are your trusted advisors. We work closely with our clients to understand the opportunities and challenges of each business and support our clients with clear, accurate and robust outcomes.

Our company works with carefully selected clients that align with our core values. We collaborate and develop close working relationships with our clients and interact successfully with government agencies and regulators to deliver planning and environmental approvals. SPM continues to grow from repeat client engagement and referrals by regional, national and international clients.



# GUIDING PRINCIPLES

## Our Purpose

To work in partnership with our clients to successfully achieve environment and planning approvals and compliance. We relentlessly focus on results, relationships and strategic outcomes.

## Our Mission

To affect positive environmental outcomes through supporting sustainable development.

## Our Values



### **PARTNERSHIP**

With a focus on collaboration, SPM builds lasting partnerships. By uniting clients, regulators and stakeholders, we deliver comprehensive solutions tailored to your business needs.



### **TRUST**

Trust is the cornerstone of SPM's relationships. Clients and regulators trust SPM's experience, ethical practices and project adaptability to deliver successful outcomes that exceed expectations and avoid regulatory burden.



### **RESULTS**

SPM ensures efficient navigation to successful environment and planning outcomes. SPM understands regulatory landscapes and streamlines processes to secure better approvals faster.

# MEET THE TEAM

**Your trusted  
Environmental  
Consultants**



## **Jacqueline Gorski BSc (Hons) PhD. Managing Director**

Jacquelle has successfully managed large multidisciplinary teams to deliver approvals for significant projects around Victoria. She has worked with Victoria's Environment Protection Authority (EPA), a multinational consulting firm and is now the Managing Director of SPM. She has successfully managed a variety of statutory planning projects and environmental assessments and has been instrumental in coordinating inputs from a range of specialists.

Jacquelle understands engineers, scientists, planners and lawyers and their importance in collaborative project delivery. She has over 25 years' experience compiling and evaluating environmental impact assessments (EIA), environmental effects statements (EES) and environmental management systems and frameworks. Jacquelle prides herself on delivering successful outcomes in environmental and planning approvals. She has extensive stakeholder management and liaison experience and is a highly competent communicator on all levels.



## **Jeremy Clifford BSc (Aquatic)(Hons) Principal Environmental Consultant**

Jeremy Clifford has over 20 years of experience as an environmental advisor and consultant on large-scale construction projects for various industry and state government sectors. He has extensive experience in environmental baseline studies, impact assessment and environmental approvals and the planning process. He has been responsible for the scoping detailed design, planning and execution of a number of large-scale, environmental monitoring programs.

Jeremy is highly skilled in implementing and assuring compliance with approval conditions and construction environmental management plans through practical and appropriate controls and monitoring. He is an excellent project manager with outstanding communication skills and a proven track record. Jeremy has worked extensively with a range of clients to coordinate complex and challenging environmental approval applications, working closely with clients seeking EPA permissions.



## **Tony Robinson B.Eng (Chem) Principal Environmental Consultant**

Tony Robinson is a Principal Environmental Consultant. Tony has 35 years' experience with environmental applications. He has extensive knowledge of environmental management across a wide range of industries and has led regulatory teams undertaking assessments, addressing compliance and providing technical advice.

Tony has a degree in Chemical Engineering and over 25 years of management and senior leadership experience. Tony is a strong communicator to all levels of government, to industry and to interested community members. He can address and explain complex issues and find workable options for resolving them. Tony joined SPM as a Principal Consultant after spending 26 years with EPA Victoria and 6 years with Earth Resources Regulation. Tony can address your air, water, noise, land, waste and risk management issues.



## **Lewis Butler. M.Env.Sc.Tech, B.Sc (Env. Sci) Senior Environmental Consultant**

Lewis is a highly skilled Senior Environmental Consultant with over five years of experience delivering precise and comprehensive environmental and human health impact assessments across a range of industry sectors. He has a proven track record in evaluating the intricate dynamics of impact pathways, from source identification to receptor sensitivity, ensuring robust analysis and the development of effective mitigation strategies.

Lewis's expertise extends to the design and implementation of environmental monitoring programs, interpretation of complex data sets, and preparation of high-quality technical reports that meet both client and regulatory requirements. He has successfully managed multi-disciplinary projects from inception to completion, coordinating teams, liaising with regulatory bodies, and engaging with stakeholders to achieve transparent and collaborative outcomes.



## **Suzy Love B.AppSc (Planning)**

### **Principal Planning and Environmental Consultant**

Suzy brings over 20 years of expertise in land, planning, and environmental approvals for major transport and infrastructure projects across Victoria. She is a proven project leader with strong stakeholder engagement skills and a passion for sustainability. Her qualifications include Urban Planning, Property Valuations, and Sustainability & Social Impact accreditation. Suzy is highly skilled in interpreting federal and state environmental legislation—including the *Marine and Coastal Act 2018*, *Aboriginal Heritage Act 2006*, and *Planning and Environment Act 1987*—and communicating complex requirements clearly. She excels in managing diverse stakeholders and delivering compliant, community-focused outcomes. Suzy's leadership and advocacy skills are driven by a passion for sustainability and the environment to enhance how people live, work, and play.



## **Steven Fox, B.Env.Sc, M. Env.Sustainability**

### **Senior Environmental Consultant**

Steven Fox is a highly experienced environmental professional with over 15 years' expertise in environmental compliance, sustainability strategy, and regulatory approvals across complex, multi-site operations. He has a strong track record delivering environmental outcomes, with capabilities in Environmental Management Systems (ISO 14001), impact assessment, and regulatory assurance. Steven has led compliance programs, audits, and inspections, ensuring alignment with State and Federal legislation while driving continuous improvement.

Steven excels at translating complex regulatory requirements into practical business solutions and has extensive experience in stakeholder engagement, regulator liaison, and executive reporting. A collaborative and adaptable leader, he is recognised for effective problem-solving and delivering compliant, sustainable outcomes.



## **Sarah Saxon PGDipSci, B.Env.Sc**

### **Senior Planning and Environment Consultant**

Sarah is a Senior Environmental Consultant with close to a decade of experience across planning, environmental impact assessment and advisory roles. Her experience includes time in both public and private sector and spans a range of industries including major energy and infrastructure projects, through to smaller industrial waste and resource recovery projects. Sarah is adept at managing multi-disciplinary projects through the approvals process, coordinating specialist teams, reviewing assessment documentation and liaising with stakeholders to achieve successful outcomes. In addition to her project management skills, Sarah is a strong written communicator, able to synthesise technical assessments and relevant legislation into clear and concise reports accessible to clients, the public and decision makers alike.



## **Madison Fraser B.Env.Sc**

### **Environmental Consultant**

Maddy is a Graduate Environmental Consultant with a strong background in aquatic ecology, environmental science, and site investigation. She has developed skills in groundwater and surface water sampling, environmental monitoring, contaminated land assessment, and data analysis through academic research and applied project work. Madison has contributed to the preparation of site investigation plans, environmental risk assessments, and technical reports, ensuring compliance with relevant Victorian legislation and guidelines. She is experienced in applying field methodologies for environmental sampling, interpreting environmental data, and communicating technical findings to both technical and non-technical stakeholders. Madison's capabilities include: aquatic ecology and environmental monitoring, hydrogeology and groundwater assessment, environmental risk assessment, contaminated land investigation, and technical reporting.



## **Ruth Creati B.A, Cert IV Bookkeeping**

### **Business Manager**

As a dedicated, self-motivated financial and business professional, Ruth brings over 25 years of experience supporting organisations through financial and administrative roles. Her expertise includes financial management—bookkeeping, payroll, statutory compliance, budgeting, and reporting—combined with strong capabilities in HR administration and OHS compliance. Ruth's strong work ethic and passion for helping organisations achieve their goals align closely with SPM Consultancy's commitment to delivering strategic and operational excellence.

# OUR SERVICES



SPM provides end-to-end environmental and planning advisory services, specialising in navigating complex regulatory frameworks across Victoria. Our approach is outcome-focused - delivering streamlined approvals, practical compliance solutions, and long-term environmental value.

## Environment & Planning Approvals

Specialists in navigating complex regulatory pathways to secure approvals.

- EPA Victoria Permissions
- Development Licences (DLA)
- Operating Licences (OLA)
- Development Licence Exemptions (DLEXA)
- Risk Management and Monitoring Programs (RMMP)
- Environmental Effects Statements (EES)
- EPBC Act Referrals
- Marine and Coastal Act Consents (MACA)
- Planning approvals and statutory pathways
- Catchment management permits and licences

We streamline approval processes, reduce regulatory risk, and provide clear pathways to approval.

## Environment Impact and Risk Assessments

Practical, regulator-ready assessments to identify and manage environmental risk.

- Air quality (odour, dust)
- Noise and vibration
- Surface water, groundwater and marine systems
- Land contamination and soil management
- Wastewater and stormwater
- Biodiversity and ecological assessment
- Coastal hazards and adaptation
- Environmental human health risk assessment

Our assessments are targeted, defensible, and aligned with regulatory expectations

## Compliance & Monitoring

Delivering practical solutions to achieve and maintain regulatory compliance.

- RMMP development and implementation
- Addressing EPA Notices and regulatory actions
- Environmental management plans (EMPs / CEMPs)
- Monitoring program design and execution
- Audit, compliance reporting and regulatory submissions

We simplify compliance requirements and ensure obligations are clear and achievable.

## Project Lifecycle Advisory

Supporting projects from early feasibility through to operation and closure.

- Feasibility and approvals strategy
- Due diligence and constraint analysis
- Support through design and construction phase
- Post-approval compliance and monitoring
- Decommissioning and closure strategies

We provide continuity across the project lifecycle to minimise risk and delays.

## Strategic Planning & Technical Advice

Strategic environmental advisory to support decision-making and approvals success.

- Regulatory strategy and approvals pathway planning
- Stakeholder and regulator engagement
- Technical advice across key disciplines
- ESG and sustainability integration
- Risk identification and mitigation strategies

We translate complex regulation into clear, practical, and implementable solutions.

# OUR COMMUNITY

## Why our clients choose us:

- Extensive industry experience
- An impressive track record delivering successful environment and planning approvals
- Consultants with combined 100 years of experience

### Van Schaik's Bio Gro

"I have always found Jacqueline and the team at SPM to be very professional in their approach to supporting our company Van Schaik's Bio Gro in all the areas that I have asked them to be involved in.

One project in particular is the support and advise that SPM provided our company in achieving DLA for our Newbridge Facility in expanding its volume capacity, their support was critical in gaining this approval.

There have been several other circumstances over the past number of years that we have required advise and support in the environment of compliance and licensing and Jacqueline and the SPM team have always been the first that we call on. I have found that their industry knowledge is second to none and I would have no hesitation in recommending their services to anyone that may require it."

### Clariant

"SPM's expertise and thorough understanding of the regulatory requirements proved invaluable throughout the process. Their professionalism, attention to detail and timely guidance made what could have been a complex and challenging undertaking remarkably smooth and efficient."

### ReSource

"SPM has been more than just a consultant to ReSource, rather, they took on the work essentially as a partner in the project as we had to address a significant range of environmental considerations for both short term operations and long-term plans for the facility"

### The Camperdown Compost Company

"I am very grateful for the support SPM have given our business over the last four years. The team have guided us and helped us maintain a good working relationship with various government entities through what has been a period of expansion for our business."

### Close The Loop

"SPM was referred to us as having a deep knowledge and practice at dealing with the EPA. We expected subject matter expertise, and strategic savvy dealing with the ogre that to us was the EPA.

SPM have generally exceeded our expectations in all aspects of their engagement.

SPM's communication was excellent, prompt and precise. Their problem solving was very good, supportive.

We are very happy with the outcome and most importantly, so is the EPA and our staff.

Would not hesitate in referring our friends to SPM. Thanks Lewis and Tony especially"-

### Acquos

"Acquos is going through a process of expansion to double our production capacity. We have been working with SPM for a few years now. Together we achieved our goal of approval for a Development Licence. Chemical Plant expansions are notorious for being overly complex and difficult environmental approval applications. SPM assisted and managed Acquos applications, conducted risk assessments and provided environmental and technical advice when / where required. Most consulting companies have the required knowledge however what we valued most were SPM employees, (in our case Jeremy Clifford and Lewis Butler).they were not only truly knowledgeable but very reliable and pragmatic in their approach."



PORT OF  
HASTINGS  
CORPORATION



**A-GAS**<sup>®</sup>  
TOGETHER WE CAN



ESTD 1859  
**MORRIS**  
RUTHERGLEN



**SCHULZ**  
ORGANIC  
DAIRY.

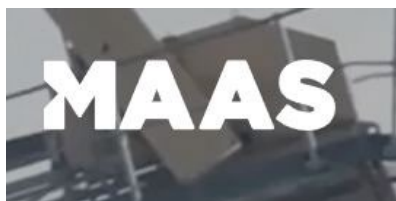


Van Schaik's  
**bio gro**  
Growing Media, Mulches & Composts



**Fulton Hogan**

BALMORAL  
QUAY



SAMSUNG C&T



# TRUSTED PROJECTS

---

## ACQUOS

### Acrylic Polymer Manufacturing

Environmental advice, project management and EPA development licence applications for expansion of the liquid and powder emulsion polymers manufacturing plant.

## CLOSE THE LOOP

### Soft Plastics Recycling Facility

Environmental advisor to a soft plastics recycling company issued a Prohibition Notice by EPA. SPM has worked with Close the Loop for >12 months addressing site activities to comply with EPA requirements.

## DJILANG ALLIANCE

### South Geelong to Waurin Ponds

Rail Duplication Land, Planning and Environment (LPE) advisor for Djilang Alliance (Downer, McConnell Dowell, ARUP and WSP) delivering the South Geelong to Waurin Ponds rail duplication for Rail Projects Victoria (RPV).

## DOWNER UTILITIES

### Wind Farm Transmission Line

Environmental support and strategic advice for the Dundonnell Transmission Line to service the Tilt Renewables Wind Farm in southwest Victoria.

## FULTON HOGAN

### Multiple EPA approvals for asphalt batching plants

Five development licence applications/exemption applications and strategic advice for asphalt batching, recycled asphalt and glass crushing plants in Mildura, Warrnambool, Brooklyn, Dandenong and Lara.

## GREAT OCEAN ROAD COASTS AND PARKS AUTHORITY

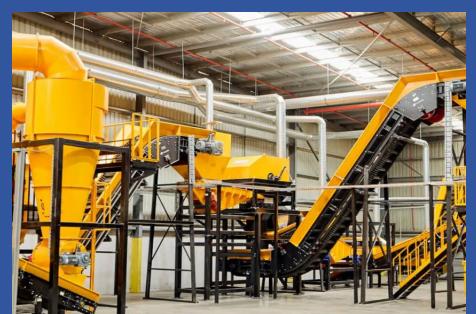
### Marine and Coastal Specialist

Marine and coastal specialist engaged by the Authority to complete environment and planning applications, including consents under the Marine and Coastal Act 2018 and Siting and Design Guidelines for Structures on the Victorian Coast 2020.

## CITY OF GREATER GEELONG

### Organic resource Recovery and Waste Transfer Station

Successfully delivered two development licence exemptions for City of Greater Geelong organics resource recovery facility and waste transfer station, to service the introduction of municipal FOGO collection and composting.



# TRUSTED PROJECTS

---

## GB ENERGY

### Gas Storage Project

Completion of an EBPC Act and EE Act self-assessment for GB Energy Gas Storage. Project to determine if a referral to the Commonwealth and State governments are required.

## RESOURCE

### E-Waste Recycling

Successfully delivered a development licence and Risk Management and Monitoring Program (RMMP) for Victoria's first battery and e-waste recycling facility in Derrimut.

## PORT OF HASTINGS AUTHORITY

### Victorian Renewable Energy Terminal

Environmental advisory role to Port of Hastings Authority, assisting with establishing the baseline and impact environmental assessments for a renewal energy terminal in Western Port Bay.

## SAMSUNG C&T

### Battery Energy Storage System

Environmental advisor to Samsung C&T, supporting the construction of a large battery storage facility in Gnarwarre Victoria.

## SAMSUNG C&T & DTI JV - Tas Vic Greenlink (TVGL)

### Marinus Link project

Environmental advisory services for the Gippsland land corridor of Marinus Link, supporting planning, approvals, and on-ground delivery of the 90 km underground transmission component.

## VAN SCHAİK'S BIO GRO

### Organic Waste Recycling

Project manager and technical coordinator to establish a large organic resource recovery facility in Victoria. SPM has also supported Bio Gro on a number of other projects including its transfer station in Dandenong South,

## VEOLIA AUSTRALIA

### Waste and Resource Recovery

Environmental approvals, compliance and strategic advice of EPA approvals for a number of Victorian sites.



# GET IN TOUCH

Contact our highly experienced environmental & planning consultants today to discuss your needs.



## CONTACT US



+61 411 551 833



[www.spm.com.au](http://www.spm.com.au)



[info@spm.com.au](mailto:info@spm.com.au)



Unit 1 / 11 Cylinders Drive